

Carrington Ridge



Elevation C



This photograph is for illustrative purposes only. The house pictured may have options and items with additional costs. Costs may be subject to change.

1266 Duansburg Road . Schenectady , N. Y. 12306 . (518) 356-5640 . Fax (518) 356-2685

"Building Homes and Neighborhoods Since 1963."

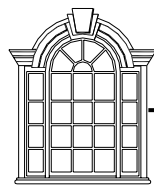
Carrington Ridge



Elevation A



Elevation B

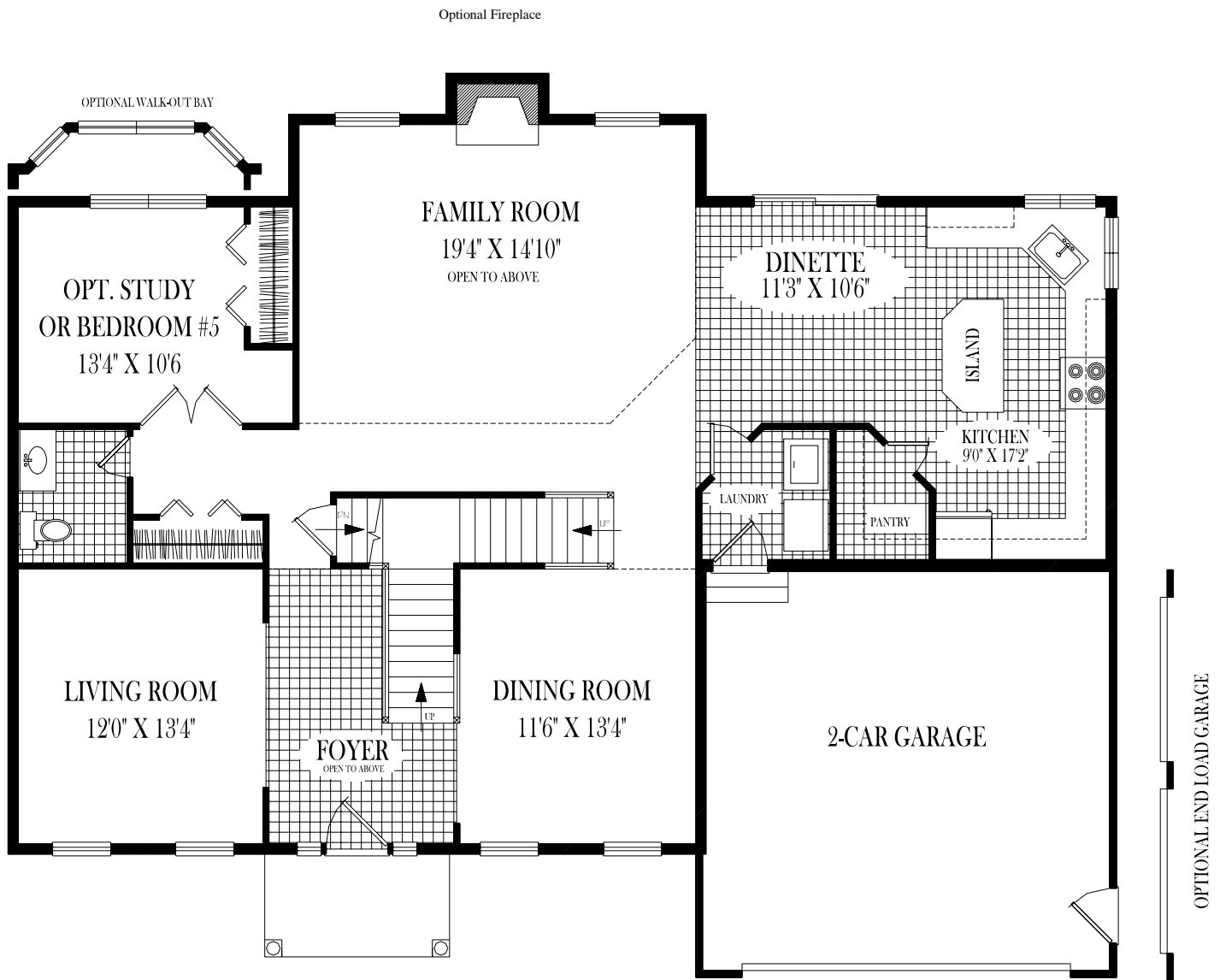


**TRADITIONAL
BUILDERS LTD.**

1266 Duansburg Road . Schenectady, N. Y. 12306 . (518) 356-5640 . Fax (518) 356-2685

"Building Homes and Neighborhoods For Over 36 Years."

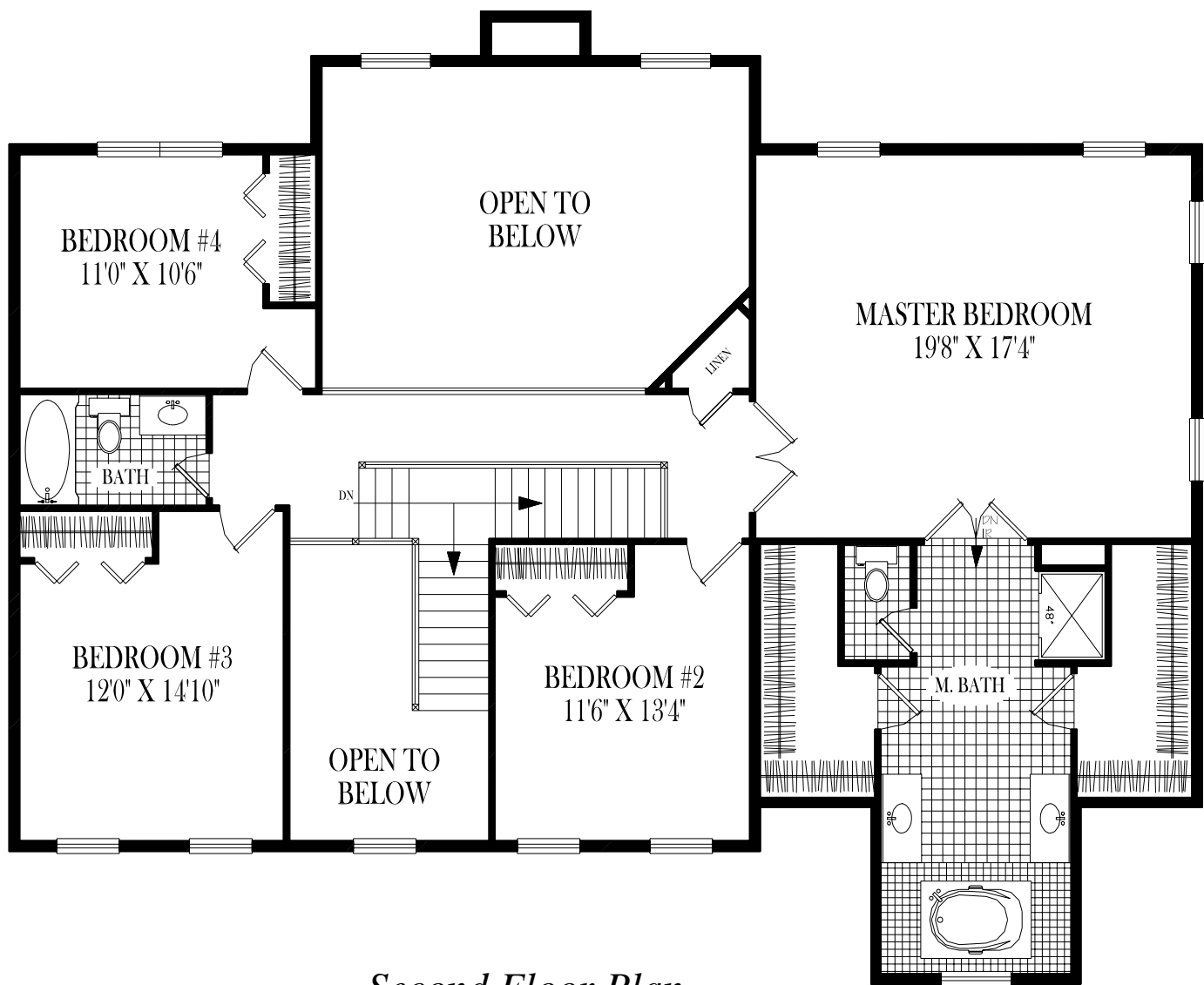
Carrington Ridge



First Floor Plan

Although all illustrations and specifications are believed correct at time of publication, accuracy cannot be guaranteed. The right is reserved to make changes, without notice or obligation. Illustrations are artist renderings. Elevations, windows, doors and ceilings ect. May vary or be optional at additional cost. Side load garages shown are optional. This sheet is for illustrative purposes only. Square footage and room sizes are approximate.

Carrington Ridge



Second Floor Plan

Although all illustrations and specifications are believed correct at time of publication, accuracy cannot be guaranteed. The right is reserved to make changes, without notice or obligation. Illustrations are artist renderings. Elevations, windows, doors and ceilings ect. May vary or be optional at additional cost. Side load garages shown are optional. This sheet is for illustrative purposes only. Square footage and room sizes are approximate.