

# *Ledgestone*



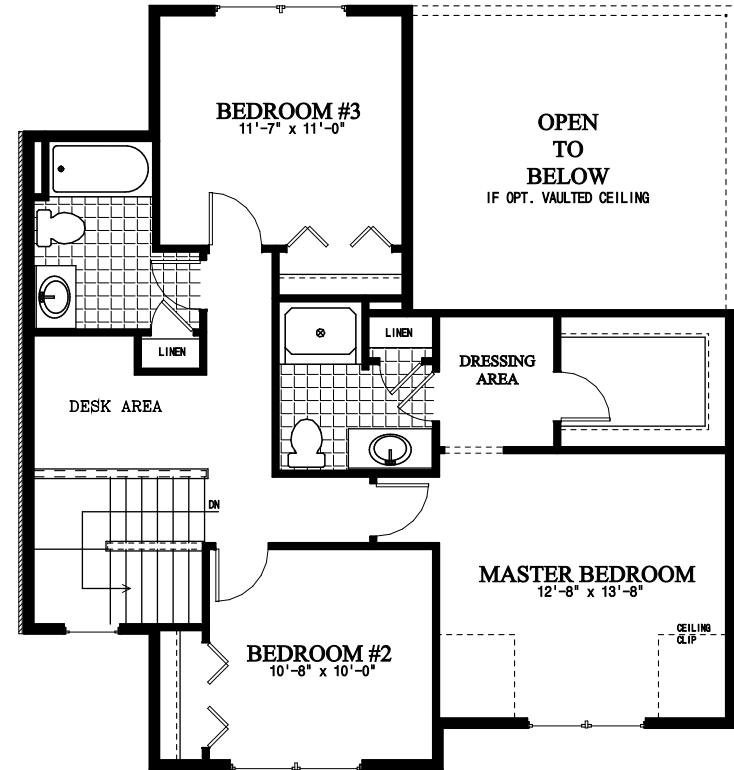
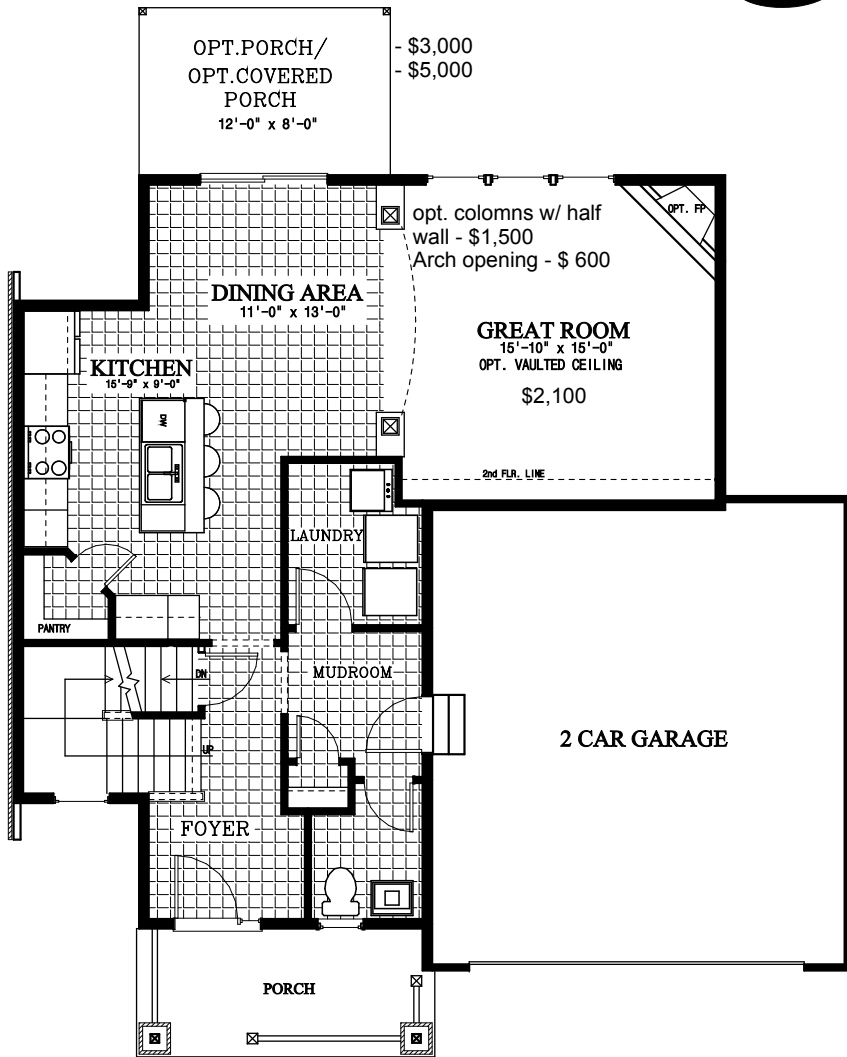
This rendering is for illustrative purposes only. The house pictured may have options and items with additional costs. Costs may be subject to change.



1266 Duaneburg Road . Schenectady , N. Y. 12306 . (518) 356-5640 . Fax (518) 356-2685

# Ledgestone

\$315,900



## SECOND FLOOR PLAN

901 sq. ft. - SECOND FLOOR LIVING AREA

## FIRST FLOOR PLAN \*\*FULL BASEMENT included

872 sq. ft. - FIRST FLOOR LIVING AREA  
1773 sq. ft. - TOTAL LIVING AREA

Although all illustrations and specifications are believed correct at time of publication, accuracy cannot be guaranteed. The right is reserved to make changes, without notice or obligation. Illustrations are artist renderings. Elevations, windows, doors, and ceiling, ect. may vary or be optional at additional cost. This sheet is for illustrative purposes only. Square footage and room sizes are approximate.